



Engineering of a backpack ventilation technology for cycling using CFD analysis

FI Michel¹✉, W Remmerie², M Kimmerle³

Background: Thermoregulation of an athlete during physical activities plays an important role especially in endurance sports such as cycling. Depending on the kind and intensity level of the activity thermoregulation can affect performance and/or thermal comfort. During cycling, especially within the MTB categories, athletes often wear a backpack. Weder et al. (2018) emphasises that even wearing a backpack during cycling has a significant impact on athlete's thermoregulation. Klauer and Michel (2018) could detect that wearing a backpack during cycling influences the microclimate (temperature and moisture between skin and first clothing layer) as well as the interlayer climate (temperature and moisture between first clothing layer and backpack). He concludes that there is still potential to optimize existing ventilated backpacks towards thermal comfort. However, Klauer and Michel (2018) and Defraeye et al. (2011) underlines the complexity of thermo-physiological measurements due to a variety of influencing factors. Therefore, they recommend a 3D modelling process in combination with computational fluid dynamics (CFD) analysis to evaluate and optimize ventilated backpack technologies.

Purpose: The overall goal of the study was to engineer a new backpack ventilation technology utilizing the relative headwind generated during cycling for convective heat transfer between backpack and first clothing layer. In a first step the flow pattern of the air around a cyclist without a backpack was analysed by means of CFD. Based on these findings

new rear panel concepts for the backpack were developed to utilize the “natural” air flow patterns to boost convection. In a third step these new rear panel designs were iteratively improved by means of CFD analysis again.

Methods: The avatar was generated with MakeHuman™ and imported with standard rig in Blender™ for posing on a bike. The anthropometrics of the avatar were derived from Australian track cyclists (MC Lean and Parker 1989). A sagittal torso angle of approx. 50° was chosen which is common in MTB XC and All Mountain categories as well for commuter bikes.

CFD Analyses were done at AirShaper™ using a steady-state RANS (Reynolds Averaged Navier Stokes) method with k-omega SST turbulence model. The boundary conditions used are: wind speed: 5.5 ms⁻¹; air temperature: 15°C, air density: 1.225 kgm³; atmospheric pressure: 101300 Pa. The focus of this study was on the upper body including the pelvis of the cyclist. To focus computational power on this area, the model was cut off just below the saddle and a moving ground was applied to avoid artificial flow effects. The qualitative evaluation of the simulation was focused on the general flow patterns (3D trajectories of “air particles”) and the pressure and velocity profiles around the torso. 3D turbulence patterns were also taken into account. No thermal effects or humidity were considered, and local velocities were used as the prime indicator for local thermal convection.

Results: The CFD analysis of rider without backpack (Fig. 1) revealed that the air flow across the shoulders rejoins after the neck & head of the rider to then speed up and stay attached down the centre part of the back to at least some extent (Fig. 1b) towards the spine region where the highest temperature development of the torso occurs (Harnisch and Katz 2010). A second air flow that showed potential to improve convective heat transfer is the one that curves around the sides of the torso (Fig. 1e, f). This suggests that the new backpack

design should catch the high velocity air flow around the shoulder & neck to then guide the air towards the spine region (Fig. 2). Additionally, for the second concept (AirTurbulencer) laterally placed air vents were aimed at catching & guiding the air streams going around the sides of the torso towards the spine region and then to the lumbar region of the back.

Fig. 3 shows that both the AirStreamer and the AirTurbulencer concept allow & promote an airstream along the spine region coming from the shoulder towards the lumbar region. Fig. 4 and 5 illustrate the same finding. The main air stream is aligned with the spinal region. The flow going around the torso however was already detached & highly turbulent when it reached the side inlets of the backpack. This could cause a reduction in thermal, although turbulent air is typically more capable of transferring heat.

Discussion: Defraeye et al. (2011) demonstrated – based on CFD analysis - that headwind affects the convective heat transfer during cycling and hence it has an influence on thermo-physiological response of the cyclist. Harnisch and Katz (2010) could detect that the region along the spine reveals a high temperature development of the torso during physical activity. The studies done by Klauer and Michel (2018) and Weder et al. (2018) demonstrated the backpack design can influence the micro as well as the interlayer climate during cycling with a backpack. The current CFD study shows the possibility to utilize the headwind generated during cycling as a driving force for convective heat transfer. Moreover, the CFD analysis clearly points out that local backpack design affects the airstream pattern between the back and the backpack.

Conclusions: The CFD analysis of the AirStreamer as well as the AirTurbulencer concept exhibit the potential to influence the convective heat transfer especially around the spine region in a positive way during cycling. However, the CFD study was focused on the velocity patterns as an indication for thermal performance, not taking the actual thermal behaviour into

account. The next step comprises a study with real athletes measuring the micro and the interlayer climate by means of temperature and humidity monitoring during cycling in a climate chamber. Such a study is necessary to confirm the findings of the CFD analysis.

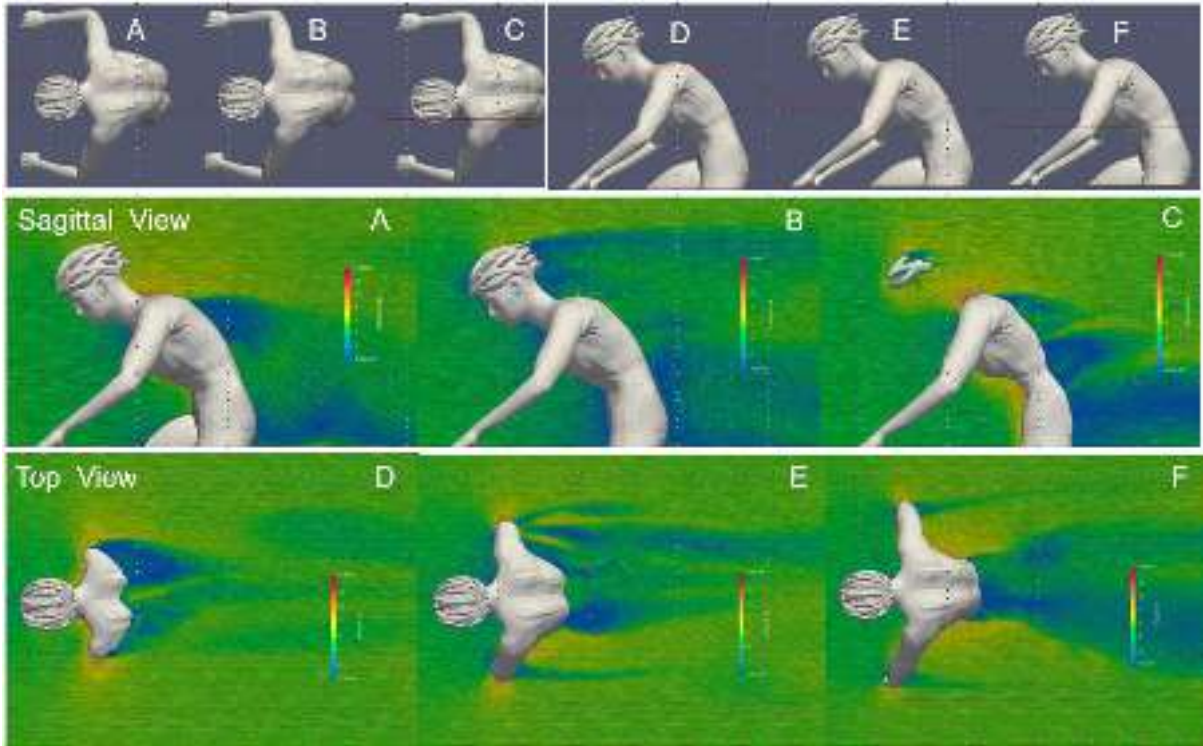


Figure 1. Air stream velocities of rider without backpack: Colour pattern indicates airstream velocity (red: high velocity; blue low velocity) and turbulences, sectional planes are marked in red depicted on top of the figure



Figure 2. Flow channel system AirStreamer concept (left side) and AirTurbulencer concept (right side)



Figure 3. Cross section view along sagittal plane of body centre: Colour pattern indicates airstream velocity (red: high velocity; blue low velocity) and turbulences (left side: AirStreamer concept; right side: AirTurbulencer concept)

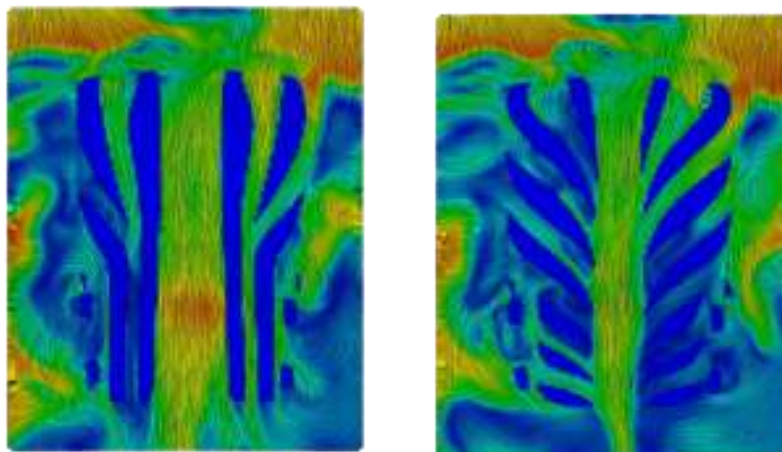


Figure 4. Sectional plane between back and backpack: Colour pattern indicates airstream velocity (red: high velocity; blue low velocity) and turbulences (left side: AirStreamer concept; right side: AirTurbulencer concept)

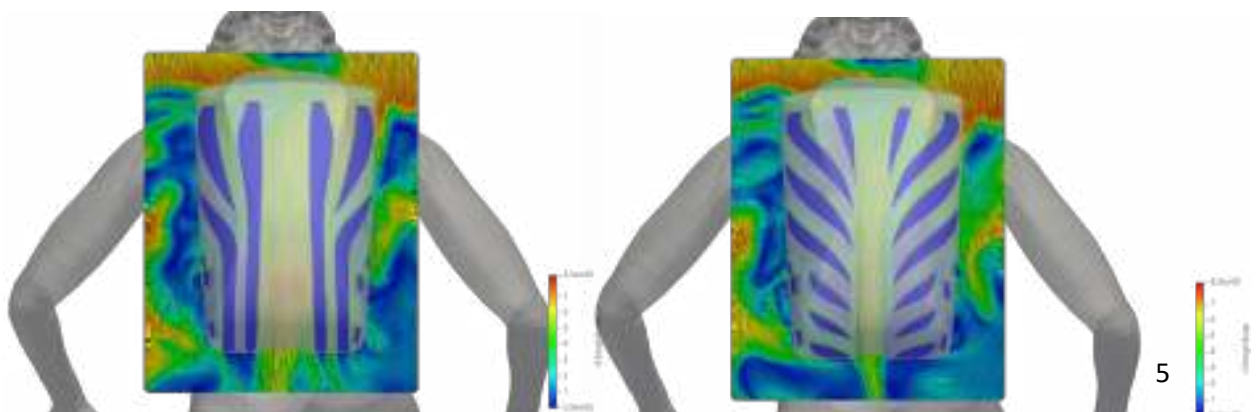


Figure 5. Sectional plane between back and backpack with added backpack outline with flow channel system: Colour pattern indicates airstream velocity (red: high velocity; blue low velocity) and turbulences (left side: AirStreamer concept; right side: AirTurbulencer concept)

References

- Defraeye T, Blocken B, Koninckx E, Hespel P, Carmeliet (2011) J. Computational fluid dynamics analysis of drag and convective heat transfer of individual body segments for different cyclist positions. *J Biomech* 44(9):1695-701.
- Harnisch M, Katz B. (2010) Verbesserung der physiologischen Funktion von Sportkleidung durch Komfortzonen. AiF-research report no. 15720 N. Hohenstein, Germany.
- Klauer R, Michel FI (2018) Thermo-physiological research of micro and interlayer climate during cycling – Influence of two different backpack systems. In M Murphy, C Boreham, G De Vito, E Tsolakidis (Eds.), *Book of Abstracts of the 23rd Annual Congress of the European College of Sport Science* (203-204). Dublin: European College of Sport Science (ECSS), Ireland.
- McLean BD, Parker AW (1989) An anthropometric analysis of elite Australian track cyclists. *Journal of Sports Sciences* 7(3):247-55.
- Weder M, Klauer R, Michel FI, Breuner F, Odenwald S, Egli W (2018) Thermophysiological comfort of cycling backpacks. In: IB Mekjavic (Ed) *Physiology and Pharmacology of Temperature Regulation - 7th International Meeting* (40). Split, Physiology and Pharmacology of Temperature Regulation Society (PPTR), Croatia.

✉ Contact email: frank.michel@vaude.com (FI Michel)

¹VAUDE Sports GmbH & Co. KG, *i*-team, Obereisenbach, Germany

²AirShaper, Antwerpen, Belgium

³Albstadt-Sigmaringen University, Faculty of Engineering, Albstadt, Germany